

State of Wyoming Corner Record

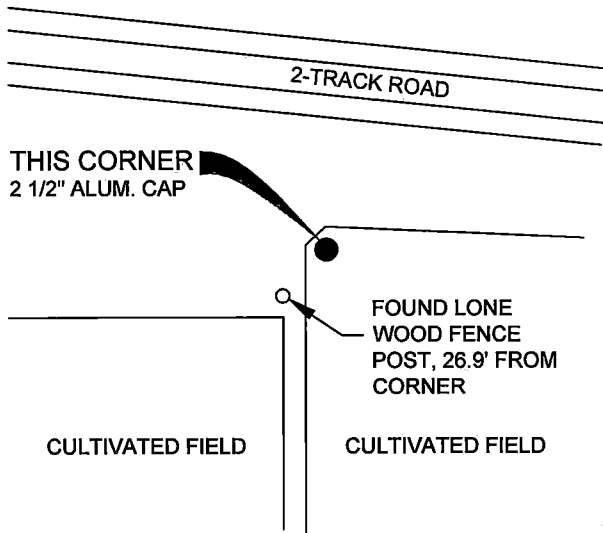
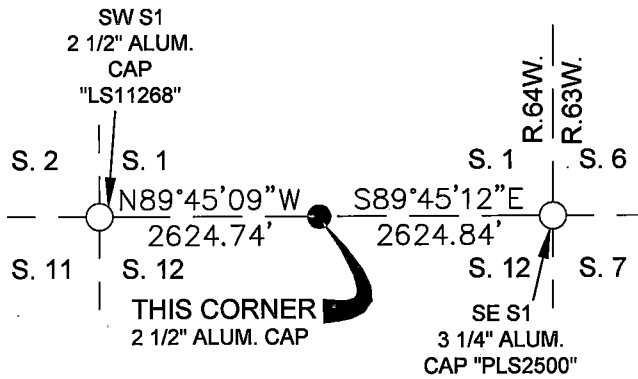
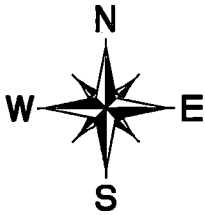
(In compliance with the *CORNER PERPETUATION AND FILING ACT*, Wyoming Statutes, 1997 Section 33-29-140 et. seq., and the Rules and Regulations of the Board of Professional Engineers and Professional Land Surveyors)

Record of original survey and citation of source of historical information (if corner is lost or obliterated). Description of corner monumentation evidence found and/or monument and accessories established to perpetuate the location of this corner. Sketch of relative location of monument, accessories, and reference points with course and distance to adjacent corner(s) (if determined in this survey).

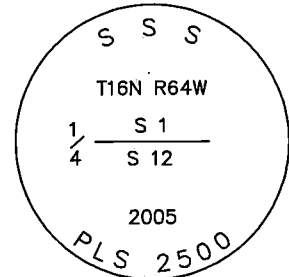
Original Record: (Alfred M. Rogers - 1871) Set a White Sandstone 14x8x5 for 1/4 Sec cor

Evidence Found: Found 2 1/2" aluminum cap marked and situated as shown below. Cap was bent over.

Perpetuation: I straighten the cap upright and built a small collar of stone around cap. Cap now projects 0.15' above ground.



Monument inscription



2 1/2 INCH DIAMETER ALUMINUM CAP

Date of Field Work: 04-27-2018 Office Reference: Book LAR-22 Pg 11 .

Cross Index Plat

	1	2	3	4	5	6	7	8	9	10	11	12	13	14	15	16	17	18	19	20	21	22	23	24	25
A																									
B																									
C		6			5				4					3					2						1
D																									
E																									
F																									
G																									
H																									
J																									
K																									
L																									
M																									
N																									
O																									
P																									
Q																									
R																									
S																									
T																									
U																									
V																									
W																									
X																									
Y																									
Z																									
	1	2	3	4	5	6	7	8	9	10	11	12	13	14	15	16	17	18	19	20	21	22	23	24	25

This corner record was prepared by me or under my direction and supervision.



BRIAN L. SCHMALZ
PLS 11268



1252 Commerce Drive
Laramie, Wyoming 82070
www.trihydro.com
(P) 307/745.7474 (F) 307/745.7729

RECP #: 733264
RECORDED 6/15/2018 AT 2:15 PM BK# 2589 PG# 2833
Debra K. Lee, CLERK OF LARAMIE COUNTY, WY PAGE 1 OF 1